

IVG Driver Training

Navigation Services



Safety Information



Driver - Do not use while vehicle is in motion.

Use of display unit while driving will cause distraction and loss of vehicle control which may lead to serious injury or death.

You cannot use the IVG to read or type messages while moving.

- Exception: a logged in, non-driving co-driver may use the IVG without restriction.



You can **listen** to messages while driving.

Goals

This presentation will show you how to:

- Generate routes
- View maps and dispatch information in Navigation





CoPilot[®] Truck[™]

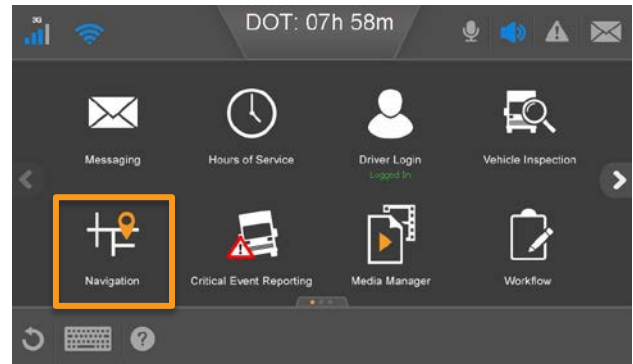
Navigation Services

Navigation

Navigation provides accurate, interactive maps, truck routing, and turn-by-turn direction.

You need to know how to:

- Navigate to and address
- Customize map display
- Set point-of-interest (POI) display options
- Customize routing options
- Generate a route detour
- Find nearby POIs (food, gas, etc.)



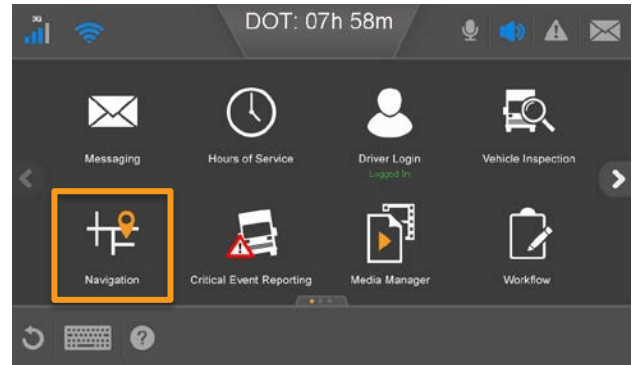
Navigation: Overview

To start CoPilot, from the Home screen, tap Navigation.

Note: You must be logged in to use Navigation.


The CoPilot Welcome screen displays as the app loads.

You see a map showing your present location.



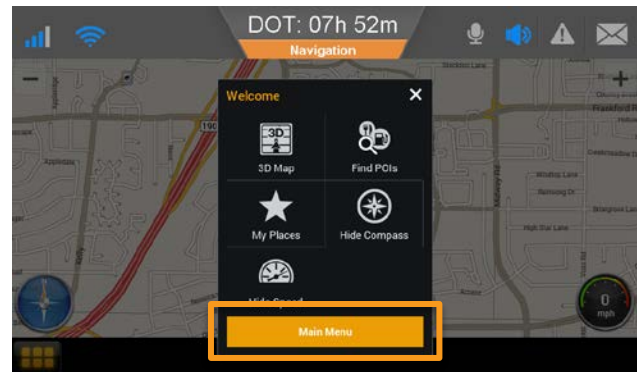
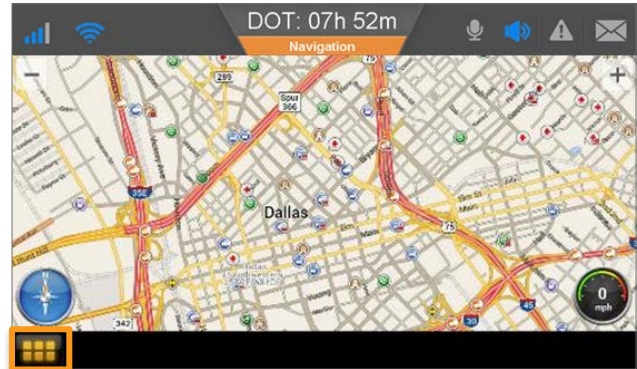
Navigation: Overview

Tap a location on the map display to learn more about it.

Tap  to open the Driving Menu.

Here you can toggle between a 2D and 3D map, find points of interest, return to favorite (saved) places, and show/hide.

Tap the X to exit the menu, or tap **Main Menu** to see more options.

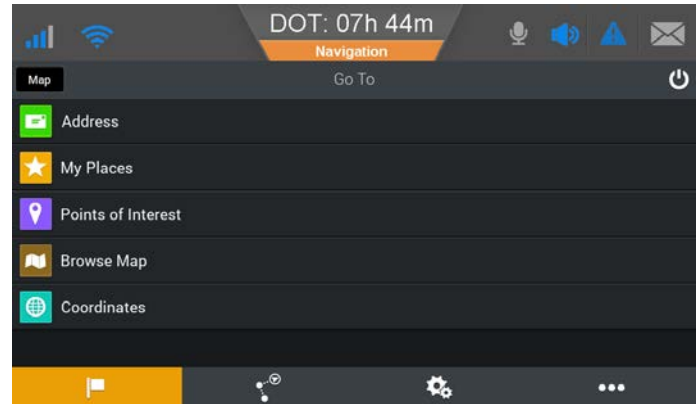


Navigation: Overview

This is the **Go To** tab on the **Main Menu**.

Each tab offers different menu options.

- Type the address to set your destination.
- Navigate to frequently-visited locations.
- Search for Points of Interest (POIs) such as ATMs, hotels, restaurants, gas stations, and airports.

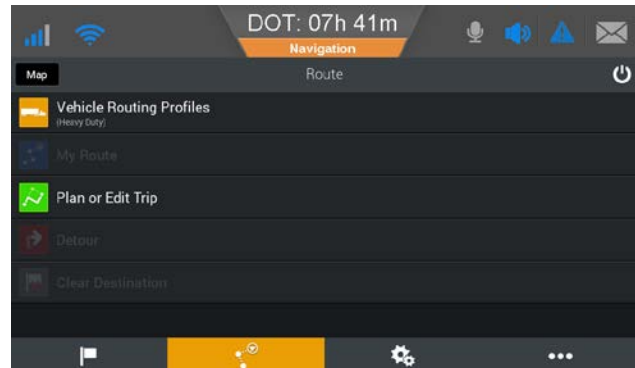
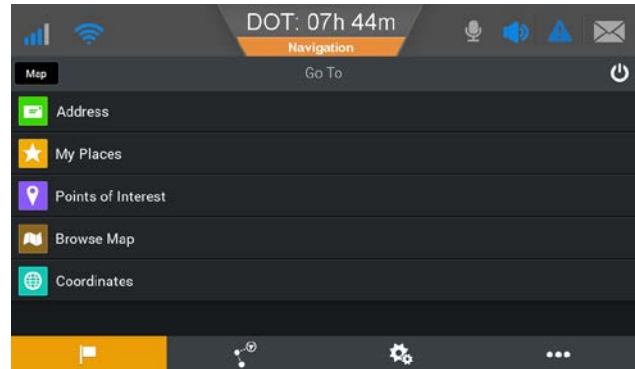


Navigation: Overview

- Tap a location on the map to specify a destination.
- Type lat/long coordinates to specify a destination.

This is the **Route** tab on the main menu.

- Customize your vehicle and navigation preferences including: Hazmat, Speeds, and Avoid Tolls.
- After a trip has begun, view up to 3 alternate routes to your destination.
- Plan a trip from start to finish adding stops such as fuel, hotel, or restaurant.

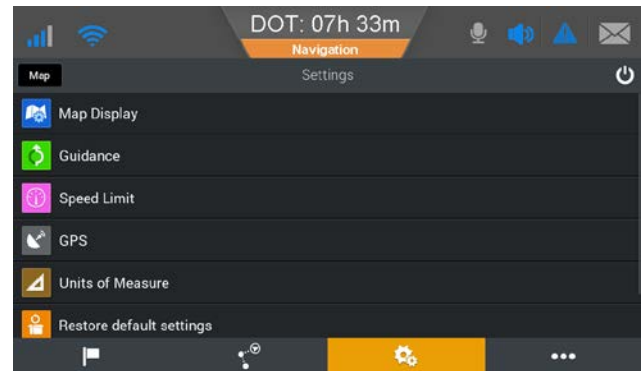


Navigation: Overview

- Make a detour to your destination.
- Stop receiving turn-by-turn guidance.

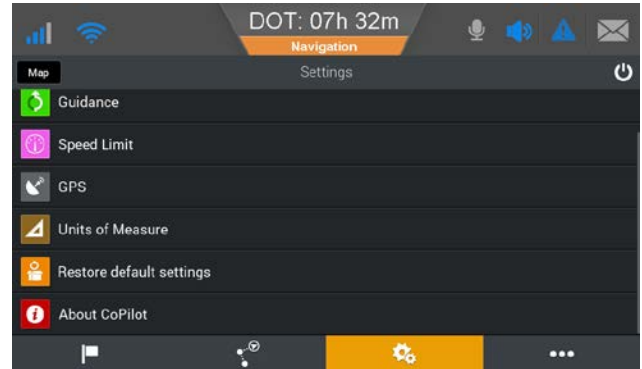
This is the **Settings** tab on the main menu.

- Change options such as how the maps are displayed.
- Display a realistic view of the road layout with lane indicator arrows and sign posts at major junctions and exits.
- Display the speed limit of the road you are on and alert if you go over.



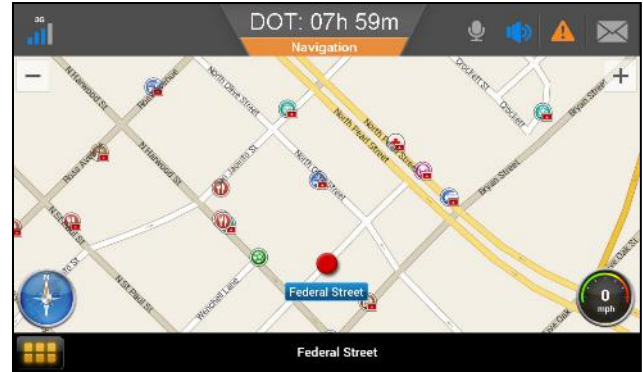
Navigation: Overview

- View current lat/long, time and date, speed and elevation
- Switch between miles and kilometers
- Restore CoPilot to original settings
- Display software versions, maps, points of interest, product code, and serial number.



Navigation: Overview

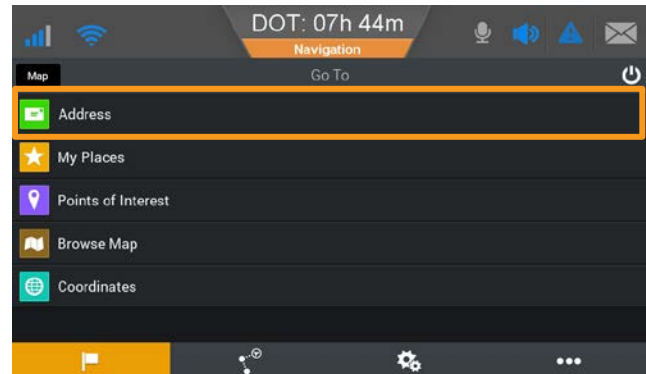
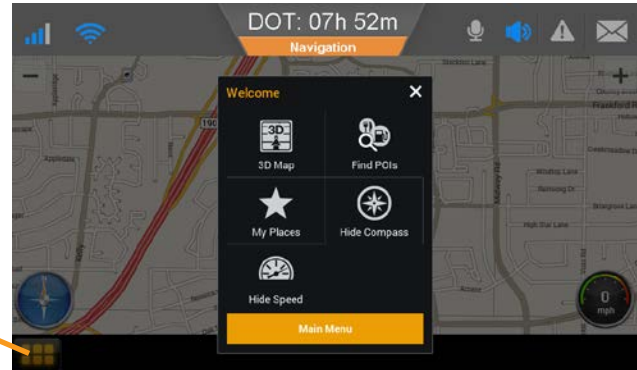
The best way to become familiar with CoPilot is to explore its menus while your vehicle is safely parked.



Navigation: Destination

To generate a route to an address from your current location:

1. Tap the menu button.
2. Tap **Main Menu**.
2. Tap Address.

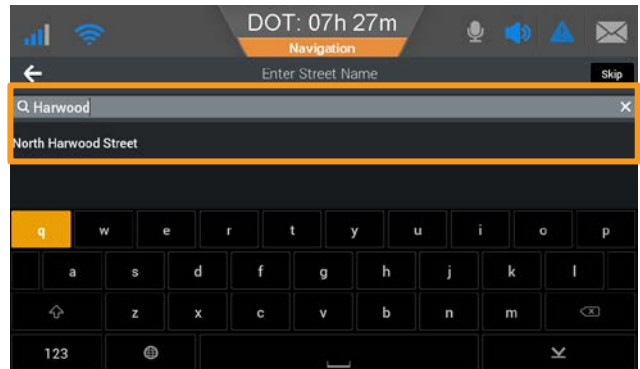
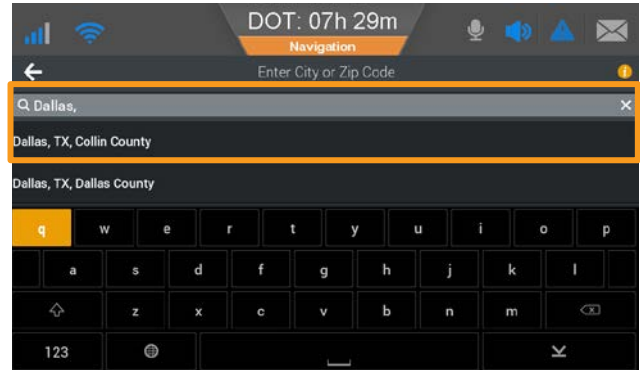


Navigation

3. Type the zip code or the first letters of the name of the city.

When the city you are looking for appears in the list, tap that line.

4. Start typing the name of the street. When the street name appears in the list, tap it.



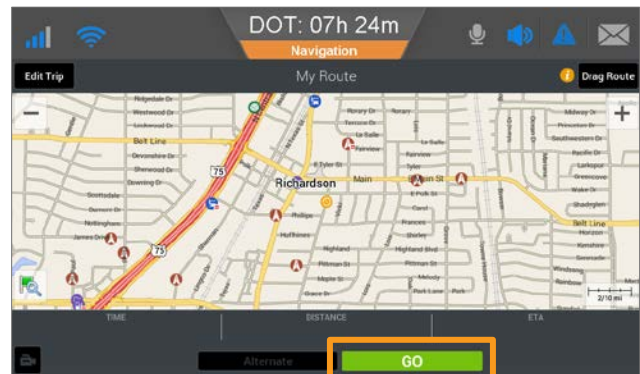
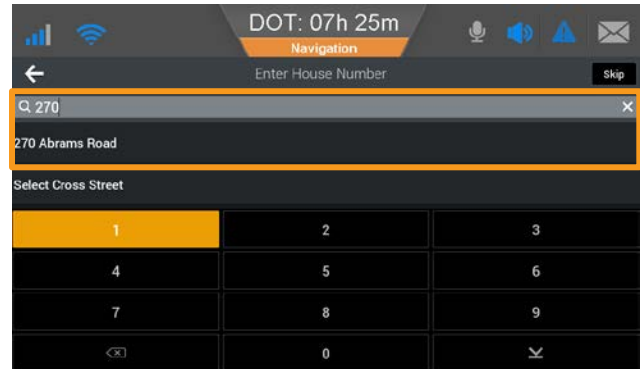
Navigation: Destination

5. Start typing the street number.

Note that CoPilot always calls the “street number” a “house number,” even if the destination is not a house.

6. Tap the address you want when it displays.

7. Tap GO. The first step of your directions displays.



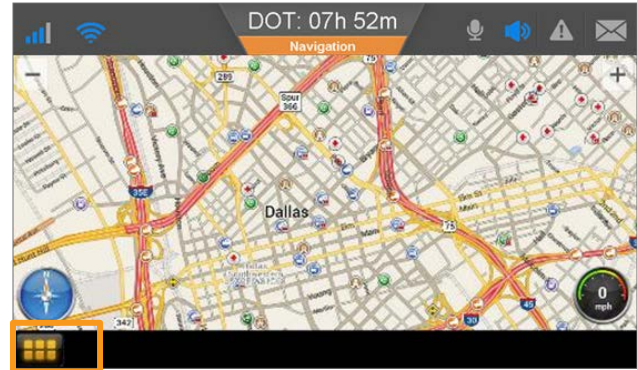
Navigation: Dispatch Integration

- Allows customers to send a dispatched route directly to a driver
- Optional feature
- Audible “Dispatch Processed” is heard over unit’s speakers

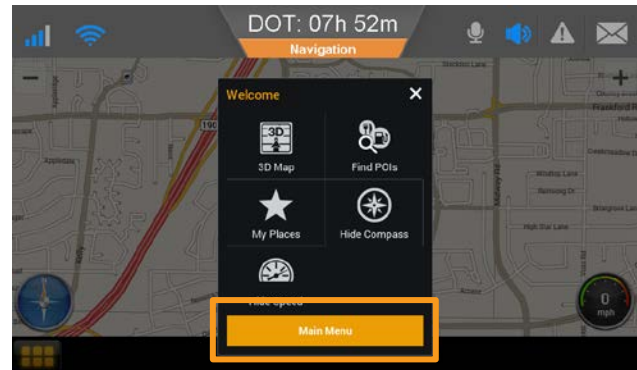


Navigation: Dispatch Integration

2. Tap the Driving Menu button.

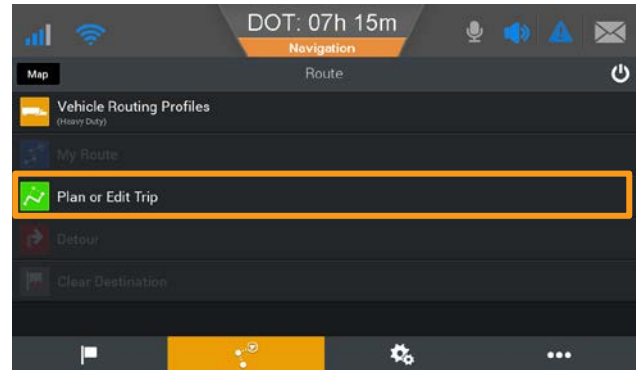


3. Tap Main Menu.



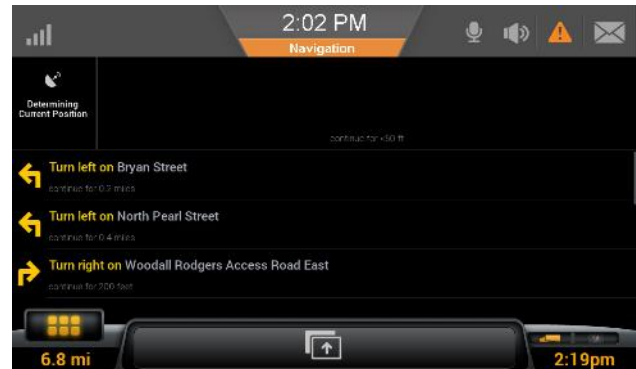
Navigation: Dispatch Integration

4. Click on the Route Menu.
5. Tap Plan or Edit Trip.



The dispatched route displays.

Note: If you create a new trip plan, the dispatched route is erased.

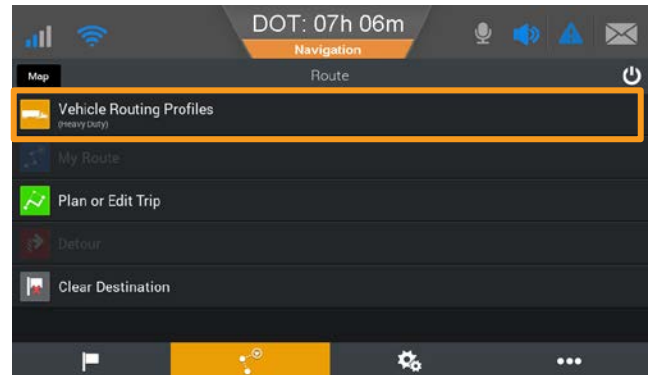
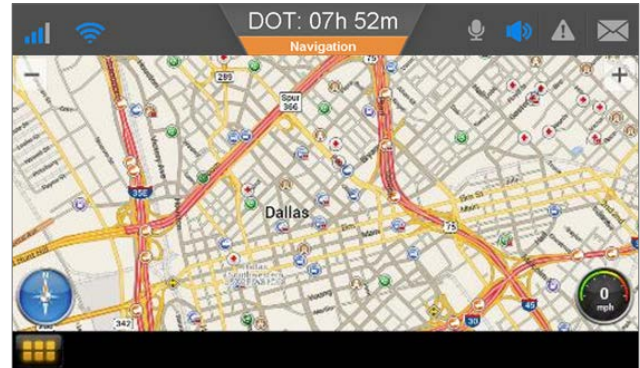


Navigation: Customize Routing Options

You can customize routing options to match your vehicle and load type to ensure safe, reliable, truck-legal routing.

To set your Vehicle Routing Profile:

1. From the Main Menu tap Route.
2. Tap Truck Routing Profile.

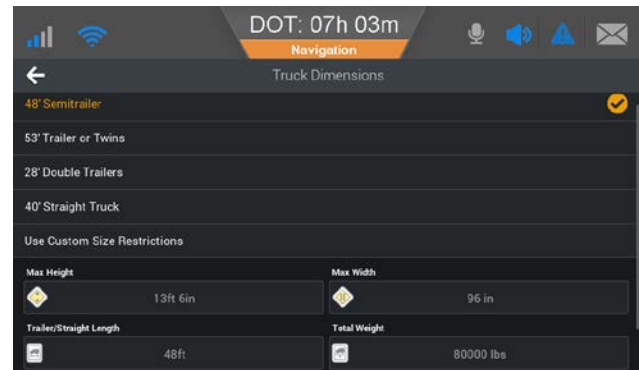
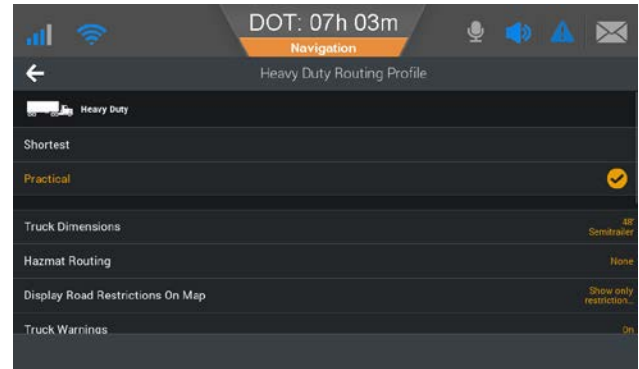


Navigation: Routing Options

CoPilot provides a number of screens where you can set parameters and choose preferences.

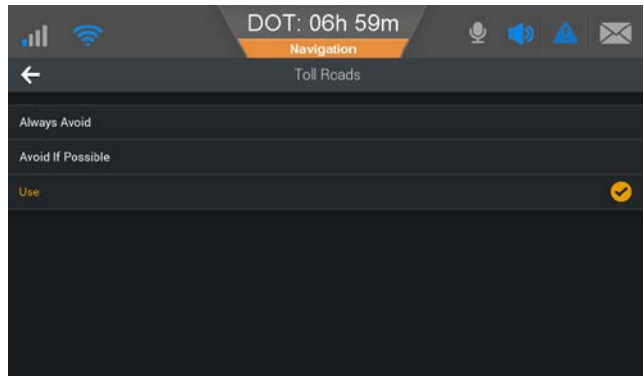
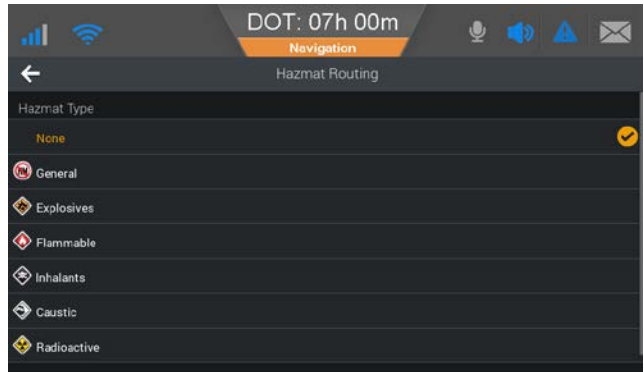
You can specify:

- The dimensions of your vehicle (standard or custom)



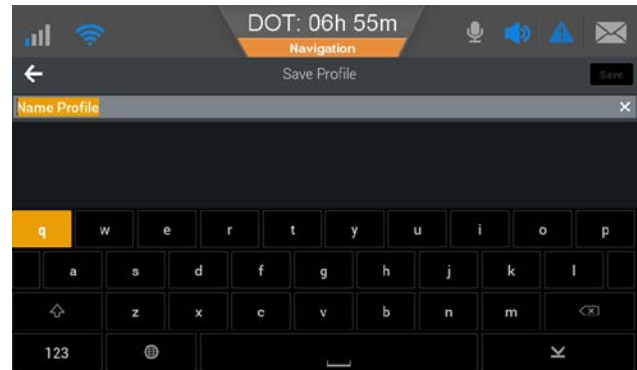
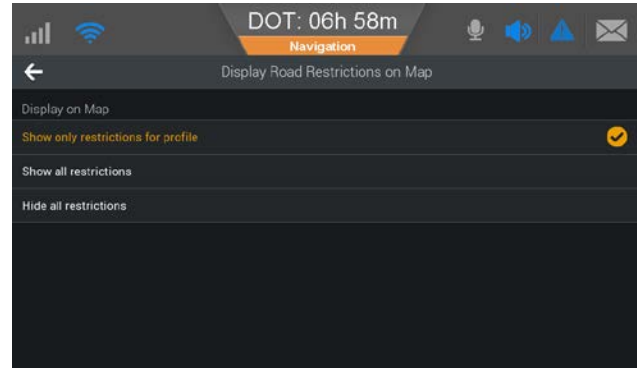
Navigation: Routing Options

- Routing alternatives for hazardous materials
- Your preferences concerning toll roads



Navigation: Routing Options

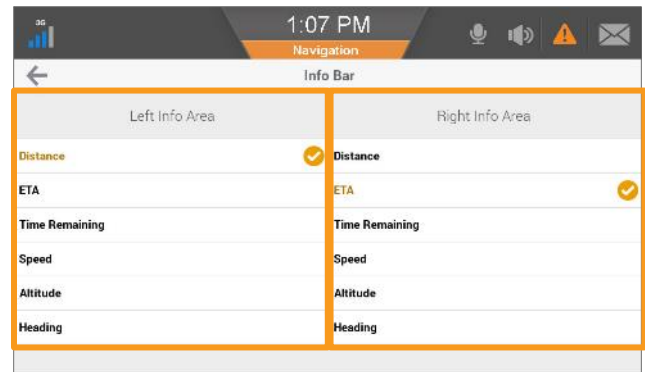
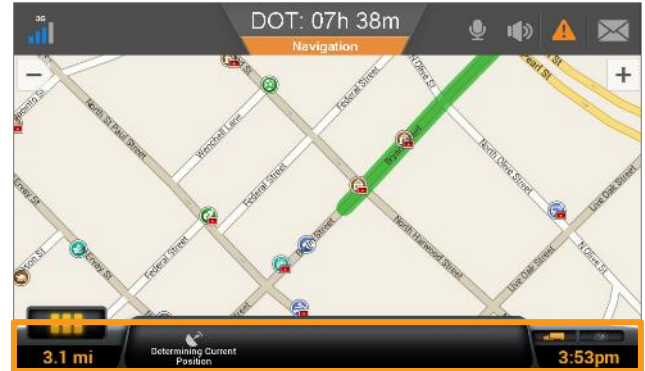
- Add other miscellaneous routing preferences
- You can save your preferences under a profile



Navigation: Customize Maps

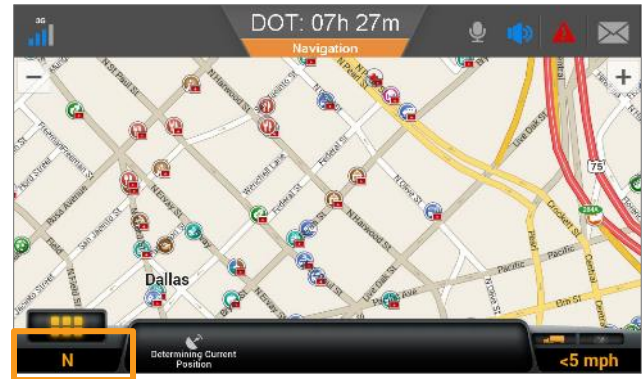
You can customize maps many different ways. Here are some of the more important customizations.

1. To choose what information to display in the right and left Info Bar display panels, tap it.
2. Tap the button that describes the information you would like to display.



Navigation: Customize Maps

For example, tap Heading in the left Info Bar to display your current heading.

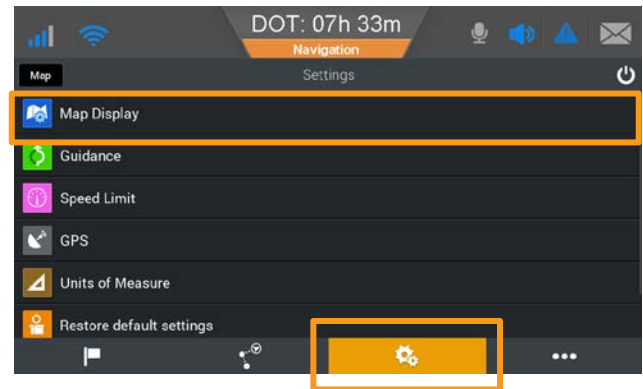
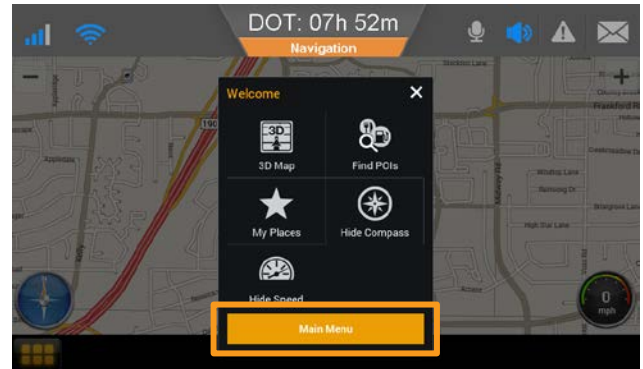


Navigation: POI Display Options

To set how points of interest (POIs) are displayed, follow the steps below.

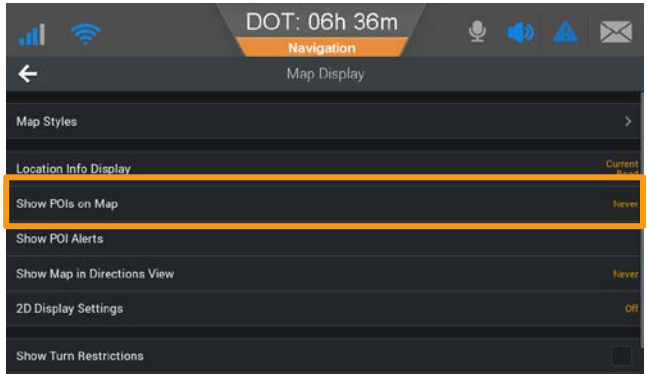
From the Main Menu:

1. Tap Settings.
2. Tap Map Display.



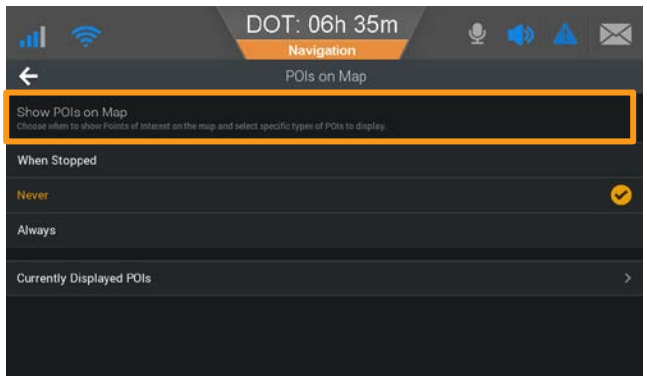
Navigation: POI Display Options

3. Tap Show POIs on Map.



4. Choose the option you want.

To see a list of the POIs currently displayed, tap the Currently Displayed POIs button.

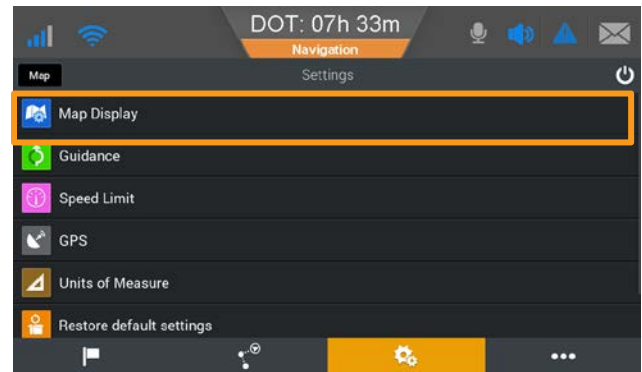
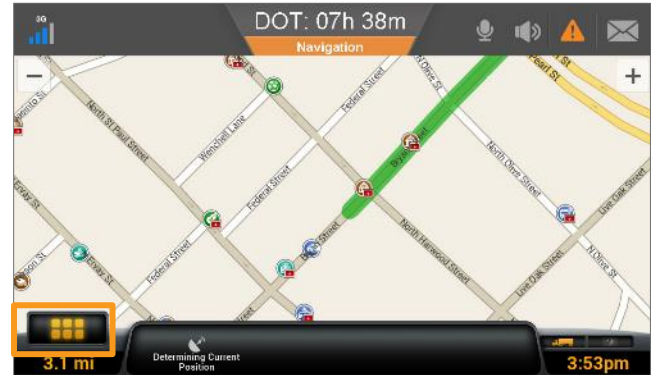


5. Tap the back arrow to keep your changes and return to the previous screen.

Navigation: Map Rotation

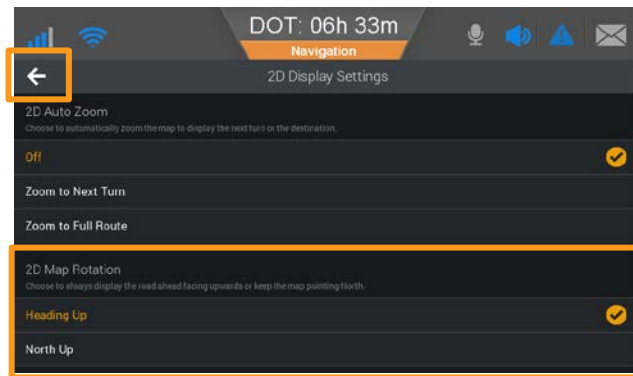
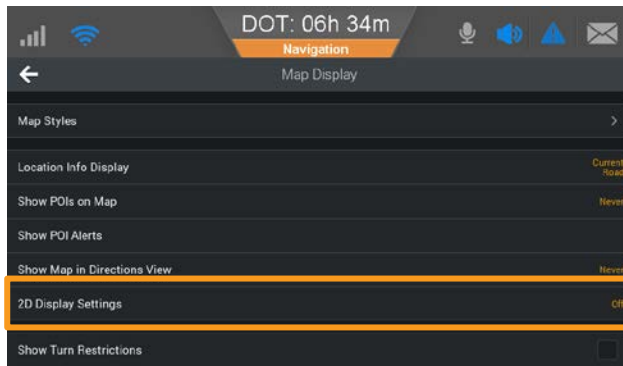
Two-dimensional maps can display with North up or your heading up.

1. To change the orientation of the map, navigate to the Main Menu.
2. Tap Settings.
3. Tap Map Display.



Navigation: Map Rotation

4. Tap 2D Display Settings.
5. With your finger, scroll down to 2D Map Rotation.
6. Choose the option you want. Here we chose North Up.
7. Tap the back arrow to keep your changes and return to the previous screen.



Navigation: Map Rotation

The map displays with North up.

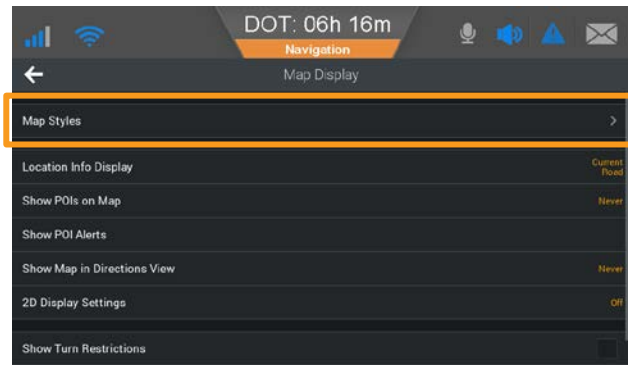


Navigation: Day/Night Mode

You can set CoPilot to use a Day Only or Night Only map style, or choose Auto to switch automatically between the day and night map styles you have selected.

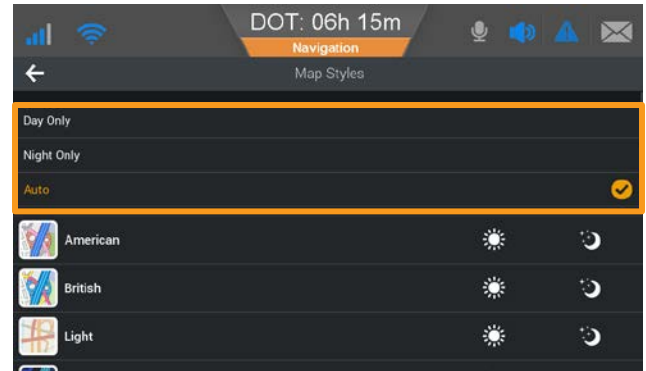
From the Map Display:

1. Tap the menu button
2. Tap Main Menu.
3. Tap Settings.
4. Tap Map Display.
5. Tap Map Styles.

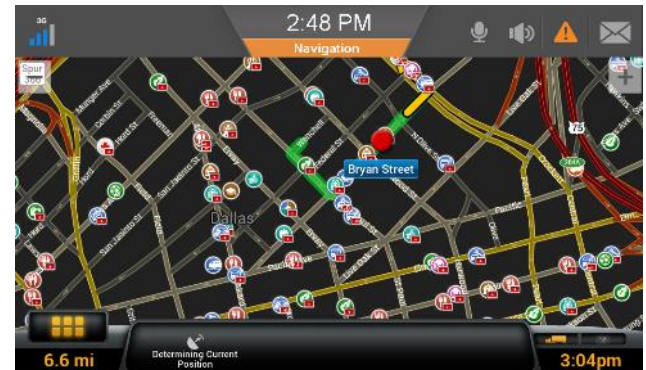


Navigation: Day/Night Mode

6. Tap the options you want.



The map displays in the selected mode.

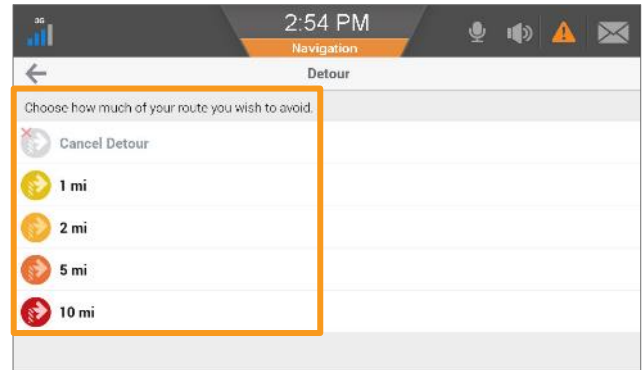


Navigation: Detour

1. To make a detour to your destination, from the Route menu, tap Detour.

CoPilot calculates and alternative route based on how much route (distance) ahead you want to avoid.

2. Select from 1, 2, 5, or 10 miles.



Navigation: Detour

The green line displays the proposed detour.

3. Tap either:
 - Original Route to use the initial route (shown in red).

OR

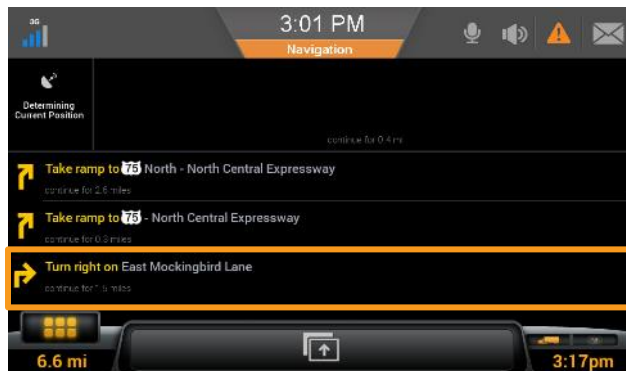
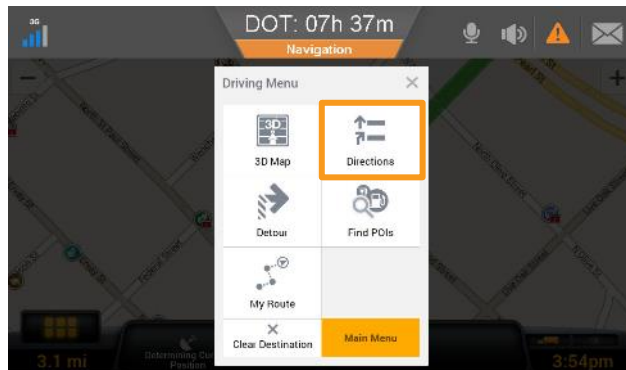
- Detour Route to accept the detour (shown in green).

4. Tap GO.



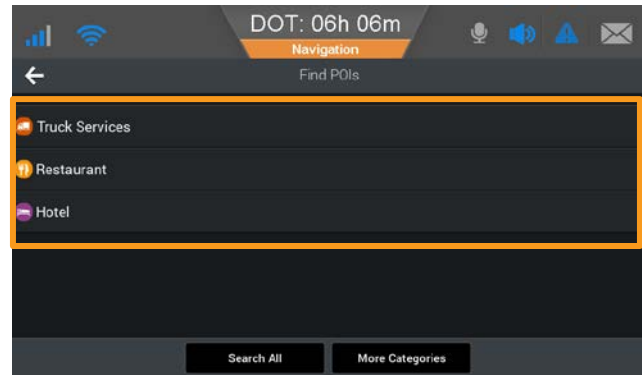
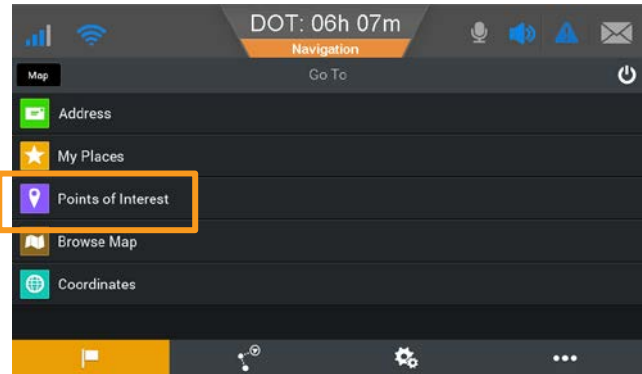
Navigation: Avoid Roads

1. To avoid specific roads to your destination, from the Driving Menu, tap Directions.
2. Tap the name of the road to avoid.



Navigation: Points of Interest

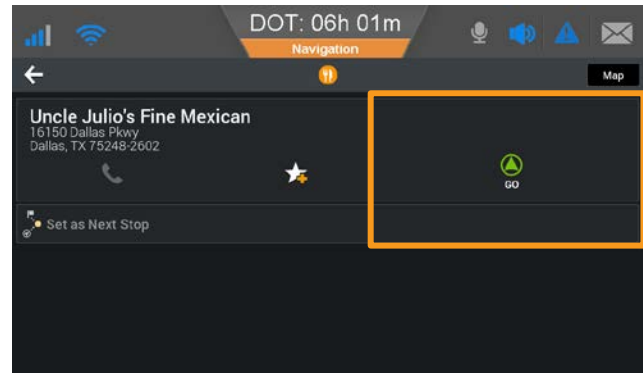
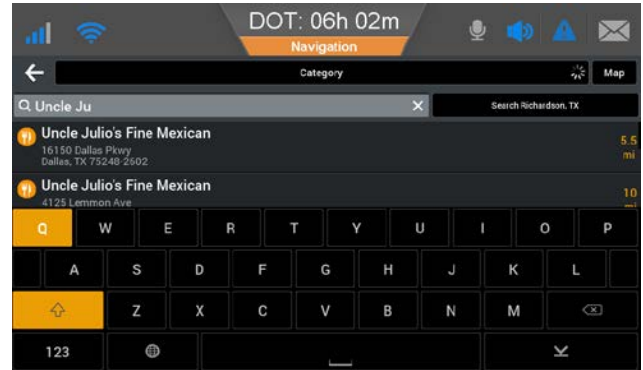
1. To find a point of interest, such as a gas station or restaurant, from the Driving Menu, tap Find POIs.
2. Tap the category of POI, for example, Restaurant.



Navigation: Points of Interest

For this example, let's find nearby restaurants and choose a category.

3. Enter a name in the Search field, tap Search nearby, or
4. Scroll the list to choose a restaurant.
5. Tap a restaurant.
6. Tap Set Go.



Navigation: Points of Interest

The green line displays the proposed route.

7. Tap GO.

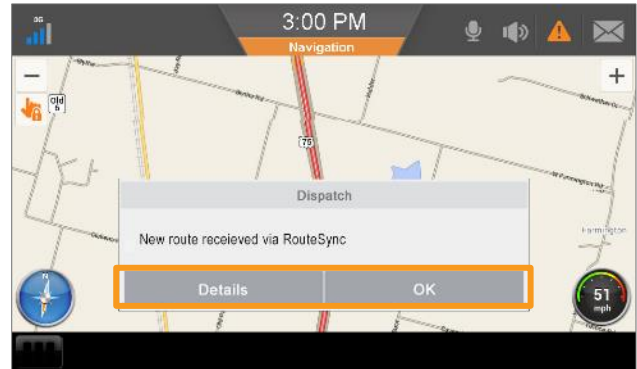


Navigation: Route Sync

Route Sync provides routes that use preferred fuel stops and account for toll entries and exits.

If you go off route, you are routed with turn-by-turn directions back to the route.

Out of route mileage is reported immediately after every trip.



If your company has Route Sync, you see this Dispatch message. Tap either:

- Details to view information about the route
- OK to accept the route and start navigation



IVG Driver Training

This concludes the Navigation Services training.